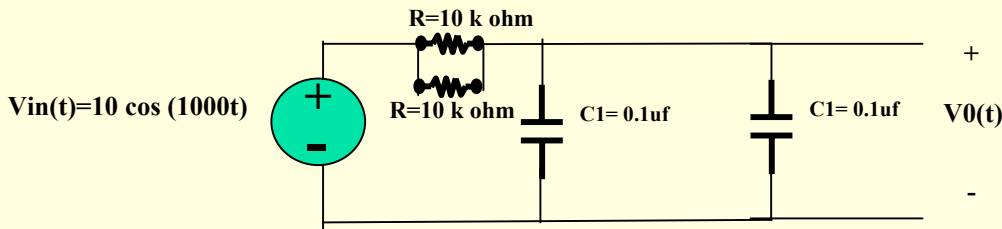


Quiz 6

- 1) For the circuit below, calculate the following:

2)



- 1) Magnitude and Phase of the transfer function
- 2) Find the break frequency
- 3) Magnitude of transfer function in Db.
- 4) Draw approximate Bode plot
- 5) Output voltage for dc input voltage of 10v
- 6) Output voltage for 1000 mHz input voltage frequency...extra credit

Saroj Pathak

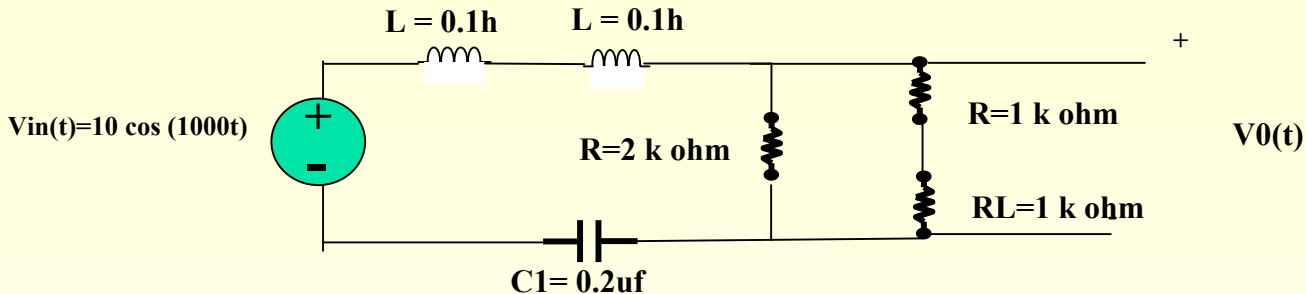
11/8/2004

UCSC EE70/L

Quiz 6

- 2) For the circuit below, calculate the following:

2)



- Equivalent Impedance
- Resonance frequency
- Voltage across capacitor and equivalent inductor at resonance frequency
- Magnitude and phase of Current supplied by the voltage supply at resonance frequency.
- Voltage across RL at resonance frequency.
- Half power frequency range for $|v_0/v_{in}| \dots \dots \dots$ extra credit