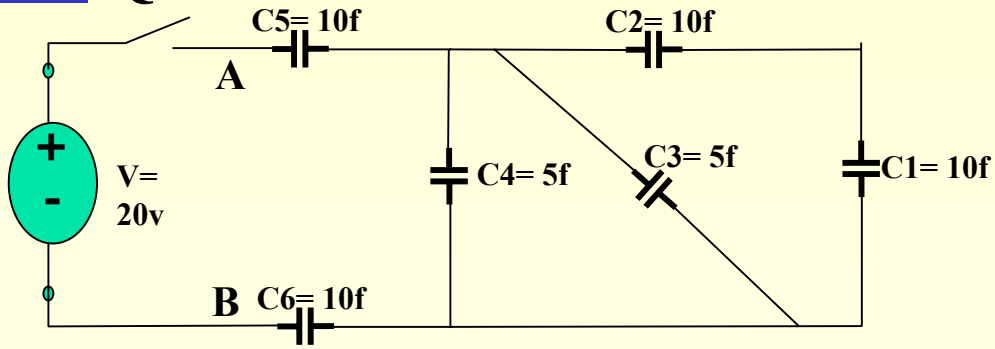


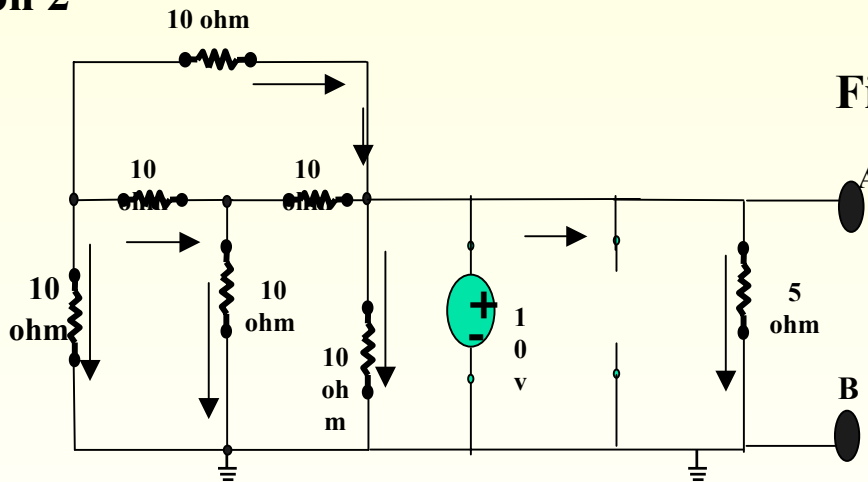
Quiz 3

Question 1



- Calculate the power supplied by the voltage source.

Question 2



Find the marked currents

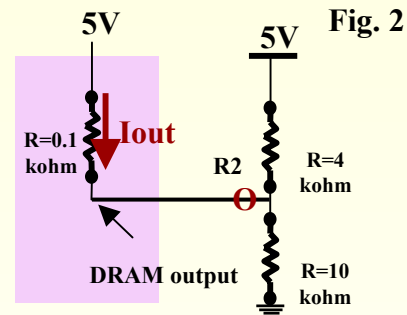
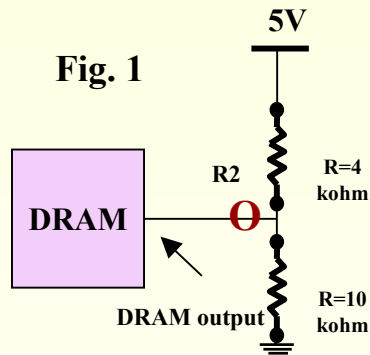
Quiz 2

- Question 3:

- The Thevenin's equivalent of the power supply coming in the home is 100v and 50 ohms resistor. What is the maximum load (resistive) you can put on the output terminal so that the current will not exceed 1 amp. What will be the power consumed by the load?

- Question 4:

- The recommended load for a DRAM memory is shown in the figure 1. Find the Thevenin's equivalent that the DRAM output will see at node O.



- If the DRAM output is represented by fig 2 , calculate I_{out} and voltage at node O