

# Adobe Photoshop

## Basic Skills

---

---

---

---

---

---

---

## Main Toolbar

- Selection tools
- Painting tools
- Drawing tools
- Color tools
  
- Options for each tool are shown in the area right under the menu bar.



---

---

---

---

---

---

---

## Selection tools

- Rectangular, Elliptical, Row, and Column
- Lasso, Polygonal, and Magnetic Lasso
- Crop
- Move
- Magic Wand
- Slice and Slice Select



---

---

---

---

---

---

---

## Painting Tools

- Airbrush
- Clone Stamp and Pattern Stamp
- Eraser
- Smudge, Blur, and Sharpen
- Paintbrush and Pencil
- History Brush and Art History Brush
- Gradient and Paint Bucket
- Dodge, Burn, and Sponge



---

---

---

---

---

---

---

## Drawing Tools

- Path Component and Directed Selection
- Pen, Freeform Pen, Add Anchor, Delete Anchor, and Convert Point
- Text
- Rectangle, Rounded Rectangle, Ellipse, Polygon, Line, and Custom Shape



---

---

---

---

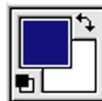
---

---

---

## Color Tools

- Foreground Color
- Background Color
- Swap foreground/background
- Set black and white



---

---

---

---

---

---

---

## Navigator and Info

- Navigator displays a small “thumbnail” of the current image.
- Info shows information related to the mouse position including color values, coordinates, and selection size.



---

---

---

---

---

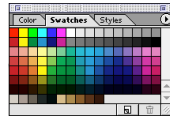
---

---

---

## Color, Swatches, and Styles

- Color shows sliders to let you adjust individual color channels.
- Swatches lets you pick colors from various standard palettes.
- Styles lets you pick different effects to paint into your image.



---

---

---

---

---

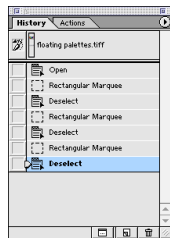
---

---

---

## History and Action

- History shows you a list of commands you have completed. With it, you can undo and redo many levels at once.
- Actions provides a list of pre-recorded sequences of commands, and tools for you to record your own sequences.



---

---

---

---

---

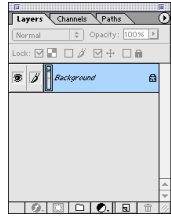
---

---

---

## Layers, Channels, and Paths

- Layers allows you to select the active layer, add and remove layers, and adjust the layer order.
- Channels lets you view individual color channels.
- Paths shows the drawing paths in your image.



---

---

---

---

---

---

---

---

## Important Tools

- Rectangular and Lasso selection
- Gradient
- Magic Wand
- Paint bucket
- Airbrush and Paint brush
- Text
- Clone Stamp
- Shapes
- Eraser
- Eye dropper
- Smudge
- Move

---

---

---

---

---

---

---

---

## Demonstrations

- Scanning images
- Layers
- History
- Saving files

---

---

---

---

---

---

---

---